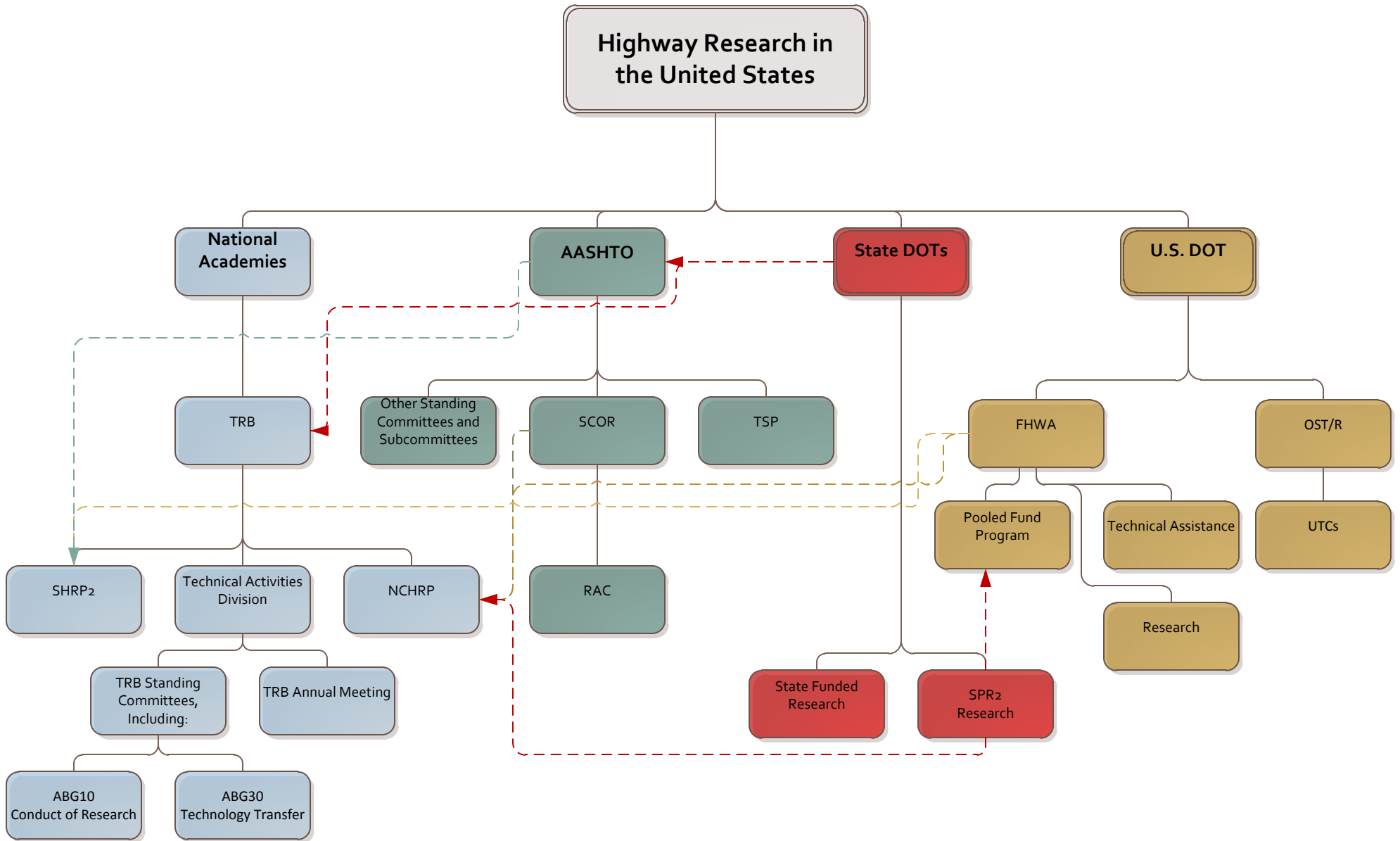


U.S. Highway Research Organizations



Highway Research in the United States

*This chart documents relationships between four of the major sponsors of highway research in the United States: the **National Academies**, **AASHTO** (American Association of State Highway and Transportation Officials), **state Departments of Transportation**, and **U.S. Department of Transportation**. Solid lines generally represent a reporting structure, while dotted lines indicate transfer of funds or advice.*

The [Transportation Research Board](#) (TRB) is a not-for-profit organization and is a division of the [National Academies](#). It is the home for two major highway research programs: the [National Cooperative Highway Research Program](#) (NCHRP) and the [2nd Strategic Highway Research Program](#) (SHRP 2). NCHRP is a cooperative research program funded by the state Departments of Transportation. SHRP 2 is a federally-funded program requested by Congress. Both NCHRP and SHRP 2 establish advisory panels that enable the major stakeholders to guide the research work. Projects are conducted by contractors, generally academic institutions or private sector consultants. TRB also manages [other cooperative research programs](#).

Among other responsibilities, the Standing [Committees](#) of TRB's [Technical Activities Division](#) organize the sessions at the TRB annual meeting. Many of these committees also generate ideas for new research. While these committees cannot submit problem statements directly to the NCHRP, they may coordinate with state DOTs, AASHTO committees, or FHWA to have ideas submitted to the program. These are the three authorized submitters of NCHRP problem statements. ABG10 and ABG30 are closest committees to research.

Research by the [state Departments of Transportation](#) can be divided roughly into

two categories: research funded through federal State Planning and Research (SP&R) funds, and those which are state-only funded. Each state provides a portion of its SP&R budget to AASHTO to fund the NCHRP. States also fund their own research projects, and collaborate with other states through the [FHWA Transportation Pooled Fund program](#). Some states conduct research in-house; most contract the work out to universities or private consultants. Most DOTs collaborate with their state university partners, some of which receive Federal grants as part of the University Transportation Centers (UTC) program.

Within the [U.S. Department of Transportation](#), the [Federal Highway Administration \(FHWA\)](#) is a partner along with TRB and AASHTO in the NCHRP. FHWA conducts its own research projects, provides assistance to the state DOTs, and administers the [Pooled Fund program](#).

The [Office of the Assistant Secretary for Research and Technology \(OST/R\)](#), has a coordination role across the USDOT and also manages delegated research programs. OST/R administers the [National Transportation Library](#) (NTL), which maintains and facilitates access to DOT and other research results as well as statistical and other information. OST/R also oversees the [University Transportation Centers](#) program, where research is typically conducted in partnership with state DOTs.

[AASHTO](#) is a not-for-profit organization that represents the state Departments of Transportation. The AASHTO [Standing Committee on Research \(SCOR\)](#) is the oversight group for the NCHRP. SCOR receives advice from its [Research Advisory Committee \(RAC\)](#).

All [AASHTO Standing Committees](#) may submit research problem statements to the NCHRP and play a role in reviewing problem statements in their areas of expertise.

[AASHTO](#) also manages [Technical Services Programs \(TSPs\)](#), most of which are 100% SPR Eligible:

TSP	100% SPR Eligible?
AASHTO Rail Resource Center	Not requested
AASHTOWare Joint Software Development	Development projects ONLY
AMRL (AASHTO Materials Reference Laboratory)	Yes
APEL (AASHTO Product Evaluation List)	Yes
CTPP (Census Transportation Planning Products)	Yes
DAMS (Development of AASHTO Materials Specs)	Yes
EMTSP (formerly AETO) Equipment Management TSP	Yes
ETAP (Environmental Technical Assistance Program)	Yes
Highway Safety Policy TSP	Yes
LRFD Spec Maintenance TSP	Yes
MTAP (Multi-State Transit Technical Assistance Program)	Not requested
NOCoe (National Operations Center of Excellence)	Not requested
NTPEP (National Transportation Product Evaluation Program)	Yes
SICOP (Snow and Ice Cooperative Program)	Yes
STEICS (formerly Climate Change Technical Assistance Program)	Yes
TC3 (Transp Curriculum Coordination Council)	Not requested
TIG (Technology Implementation Group)	Yes
TRAC/RIDES (Transportation and Civil Engineering)	No, NOT ELIGIBLE
TSP2 (Transportation System Preservation TSP)	Yes